

# CLEANING, POLISHING AND MARKING OF STAINLESS STEELS

## OPTICLEAN II

**Inverter-technology installation for cleaning, polishing and marking of stainless steels. Use on TIG welds.**

### Your benefits:

- ◆ **AESTHETIC:** no stains on the steel after cleaning.
  - ◆ **ECOLOGICAL:** no need to wear gloves or protective masks with the neutral solution. Large outdoor areas are not required: no toxic vapor emissions, no need for water treatment plant.
  - ◆ **ECONOMIC:** no passivation after cleaning
  - ◆ **GAIN OF PRODUCTIVITY:** no need to dip the pump into the liquid and to interrupt the operation several times.
- Improvement of the quickness while increasing current. Efficiency increased with the carbon blush.



**INVERTER TECHNOLOGY**

| OPTICLEAN II                          | To order   |
|---------------------------------------|------------|
| Machine OPTICLEAN II including :      | W000382322 |
| Torch                                 | W000275260 |
| Torch support                         | W000382323 |
| Torch support extension               | W000382325 |
| Ground cable                          | W000375139 |
| Torch power cable                     | W000375141 |
| 2,5 mm Allen key                      | W000382326 |
| Brush                                 | W000382329 |
| Standard graphite insert 90°          | W000382571 |
| Narrow graphite insert 90°            | W000382572 |
| Standard TIG Bond pad 90° (by 10)     | W000272348 |
| Narrow Tig Bond pad 90° (by 10)       | W000272351 |
| Brill Bomar solution (100 ml)         | W000272347 |
| Brill Bomar solution (1,5 l)          | W000387219 |
| Neutral Bomar solution (100 ml)       | W000272038 |
| Neutral Bomar solution (1.5 l)        | W000387218 |
| Neutralizing solution Inox Fit 500 ml | W000274842 |

| Optional                                 | To order   |
|--|------------|
| Marking Kit INCLUDING :                  | W000271936 |
| Black marking electrolyte 100 ml         | W000272041 |
| Erosion white marking electrolyte 100 ml | W000382573 |
| Graphite marking insert 35 mm            | W000272039 |
| Marking felts insert                     | W000272040 |

| Marking stencils dimensions | To order   |
|-----------------------------|------------|
| 25 x 15 mm                  | W000386781 |
| 54 x 16 mm                  | W000386780 |
| 54 x 32 mm                  | W000386779 |
| 85 x 27 mm                  | W000386785 |
| 85 x 54 mm                  | W000386786 |
| 128 x 42,5 mm               | W000386787 |
| 128 x 85 mm                 | W000386782 |
| 170 x 54 mm                 | W000386783 |
| 170 x 108 mm                | W000386784 |

Available sizes for the marking : 54 x 32 mm / 85 x 54 mm / 128 x 42,5 mm / 170 x 54 mm.  
You just have to send your logo with the chosen dimensions.

**You can simply order the marking kit and a cliché, providing us with your logo or any other writing: you can mark the product at least 500 times !**

| Technical data         | OPTICLEAN II         |
|------------------------|----------------------|
| Supply Voltage         | 230 V / 1Ph          |
| Frequency              | 50/60 Hz             |
| Capacity               | 450 W                |
| Electrode Voltage      | 10/30 V AC/D         |
| Isolation Class        | IP 23                |
| Noise level            | < 10 dB [A]          |
| Machine weight (empty) | 7 kg                 |
| Machine dimensions     | 3 300 x 230 x 240 mm |

See the video



### 1 - Cleaning

Place the cleaning solution onto the torch and choose whether you want to use the pad or the brush, which gives better access to angles that are difficult to reach. Rub the weld till its colour becomes clean.



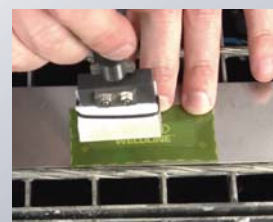
### 2 - Polishing

Place the polishing solution onto the torch and choose whether you want to use the pad or the brush. Rapidly, as you rub the weld, it will start to shine. Wipe your steel with a cloth rag in order to avoid stains.



### 3 - Marking

Take the appropriate suitcase containing both marking and eroding electrolytes. Rub the marking felt moistened with the electrolytic solution on the screen printing frame. Your logo is printed on the metal.



**CAUTION:**  
before use, carefully read and understand the safety datasheet available on our websites